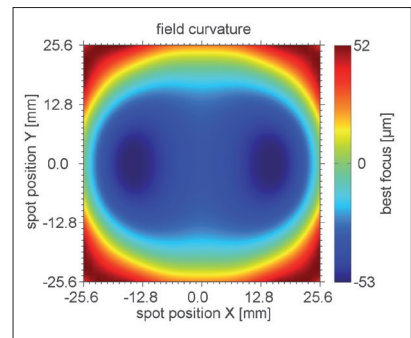
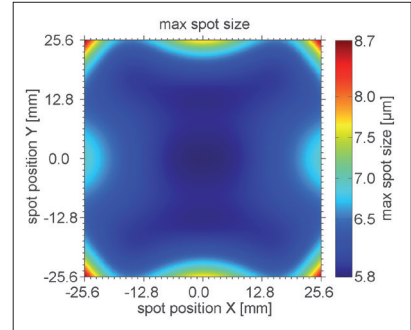


F-Theta JENar™ Silverline™ Lens
High Power Lens – JENar™ 103-266-71

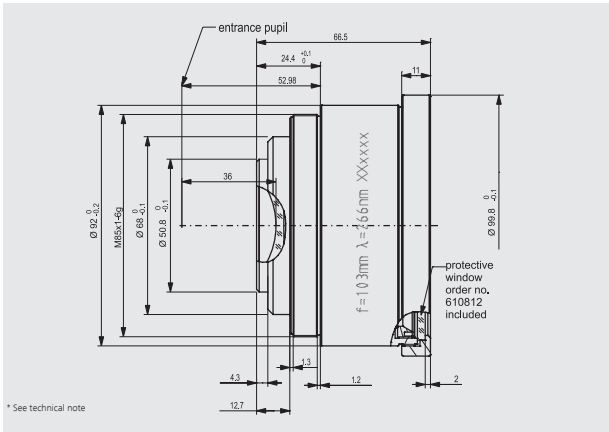


Parameters	JENar™ 103-266-71 Telecentric fused silica lens
Focal length:	103 mm
Wavelength:	266 nm
Scan field (X x Y); Ø:	(50 mm x 50 mm); 71 mm
Diagonal scan angle:	± 20.1°
X/Y mirror angle:	± 7.2°
Back working distance:	133 mm
Flange focus distance:	175.1 mm
Input beam Ø 1/e ² :	9 mm
Focus size Ø 1/e ² :	6 µm
a1 a2:	14 mm 46 mm
Telecentricity (only F-Theta with scanner):	2.6° 2.9°
Group delay dispersion (GDD)*:	9350 fs ²
LIDT coating pulsed; CW*:	not available yet
LIDT system pulsed; CW*:	not available yet
Weight:	0.7 kg
Order Number:	017700-601-26

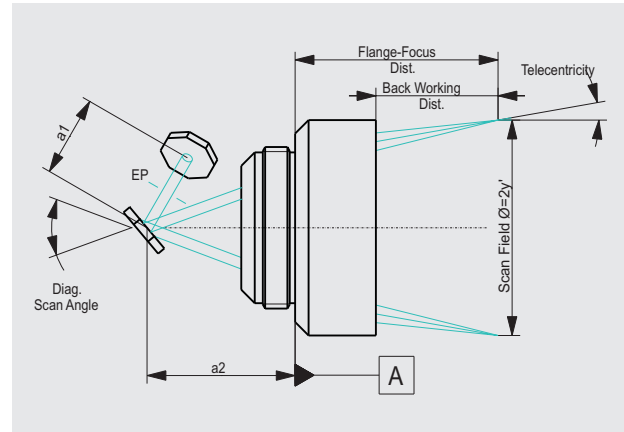
Spot properties



Specifications
JENar™ 103-266-71



Definition of geometrical parameters



JENar®: Registered in EU, CN, JP, SG, US | Silverline®: Registered in DE, JP, SG, IN

The data given are nominal values for the specified application parameters. Jenoptik provides Zemax® BlackBox files for simulating application results for customized parameters (e.g. wavelength, scanner geometry, beam diameter, ...).
Back working distance, Flange focus distance, and focal length vary by ± 1.5 % due to manufacturing variances.

It is our policy to constantly improve the design and specifications. Accordingly, the details represented herein cannot be regarded as final and binding.