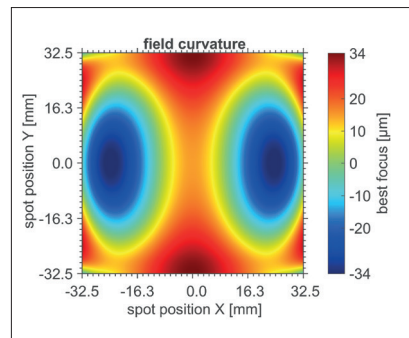
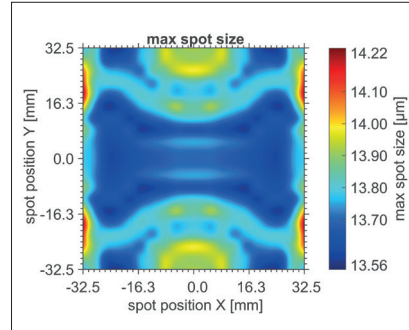


F-Theta JENar™ Silverline™ Lens
High Power Lens – JENar™ 163-515...540-92



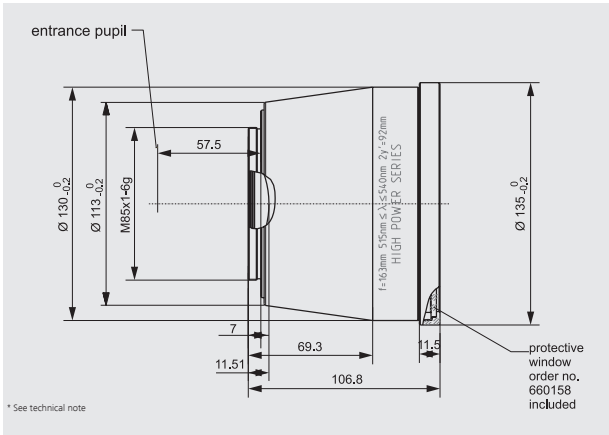
Parameters	JENar™ 163-515...540-92 Fused silica lens for Ultrashort pulse
Focal length:	163 mm
Wavelength:	515...540 nm
Scan field (X x Y); Ø:	(65 mm x 65 mm); 92 mm
Diagonal scan angle:	± 16.4°
X/Y mirror angle:	± 5.8°
Back working distance:	234.7 mm
Flange focus distance:	334.5 mm
Input beam Ø 1/e ² :	12 mm ^{A)}
Focus size Ø 1/e ² :	14 µm
a1 a2:	17 mm 49 mm
Telecentricity (only F-Theta with scanner):	0.4° 1.0°
Group delay dispersion (GDD)*:	4515 fs ²
LIDT coating pulsed; CW*:	2.5 J/cm ² * (τ/[ns]) ^ 0.35; 2.5 MW/cm ²
LIDT system pulsed; CW*:	2.5 J/cm ² * (τ/[ns]) ^ 0.35; 2.5 MW/cm ²
Weight:	2.196 kg
Order Number:	659612

Spot properties

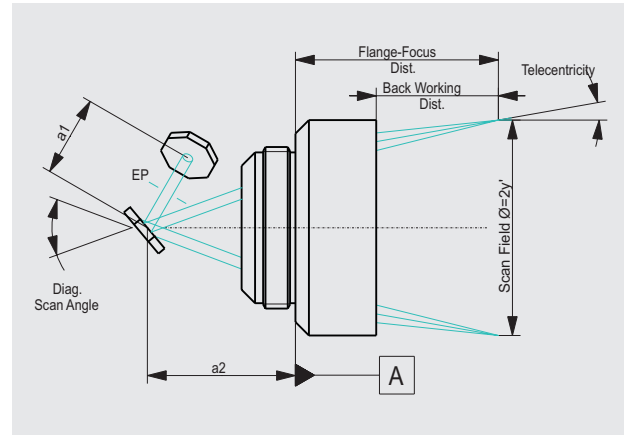


^{A)}14 mm aperture possible without vignetting

Specifications
JENar™ 163-515...540-92



Definition of geometrical parameters



JENar®: Registered in EU, CN, JP, SG, US | Silverline®: Registered in DE, JP, SG, IN
659612: Utility patent DE 20 2020 104094.4

The data given are nominal values for the specified application parameters. Jenoptik provides Zemax® BlackBox files for simulating application results for customized parameters (e.g. wavelength, scanner geometry, beam diameter, ...).
Back working distance, Flange focus distance, and focal length vary by ± 1.5 % due to manufacturing variances.

It is our policy to constantly improve the design and specifications. Accordingly, the details represented herein cannot be regarded as final and binding.